

KitCobras.com

The finer details

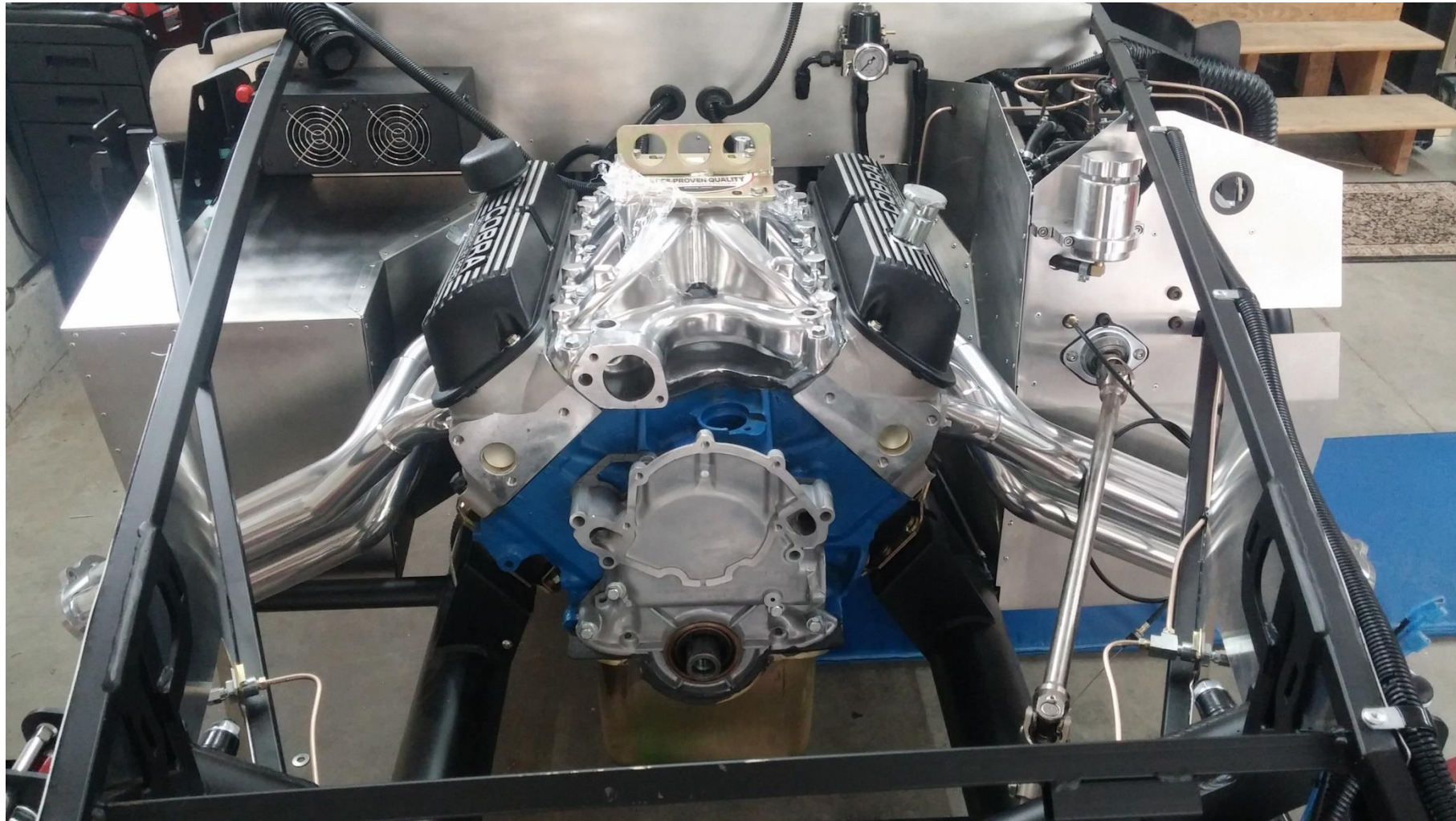
Engine Compartment

- Cockpit heater mounted on the firewall inside the engine compartment allows for Glove box to be installed

- Fuel Regulator w/ Braided high pressure lines and Black Dash fittings



- Engine Compartment aluminum brush finished and protected with high temp clear coat



351 Stroker Small block installed w/headers



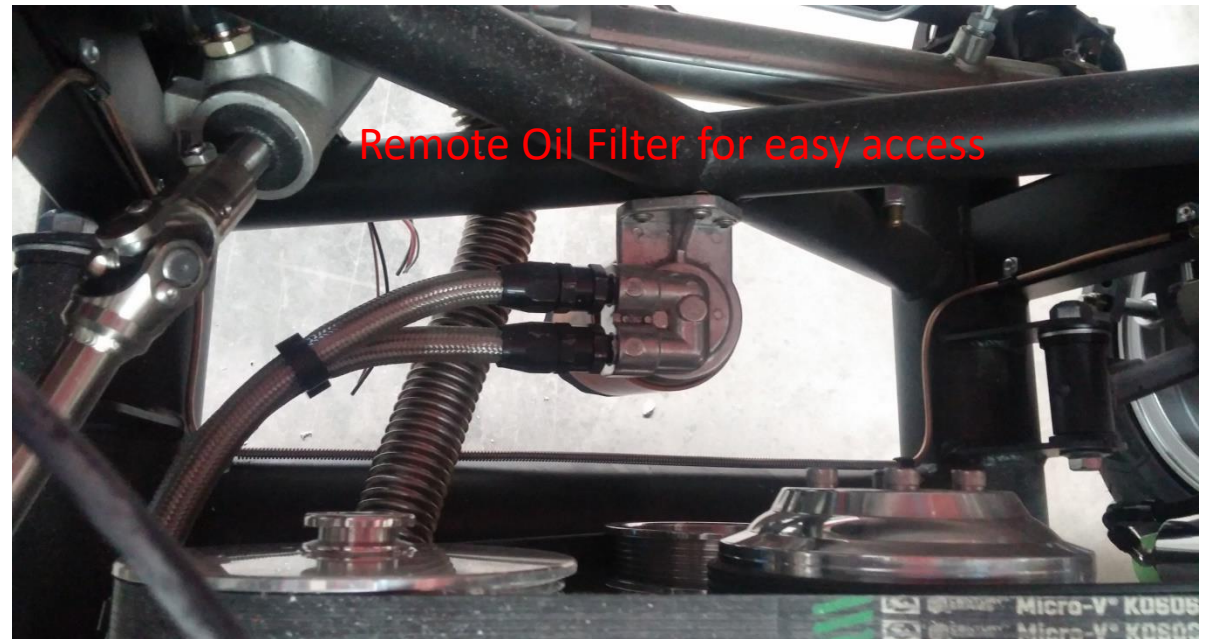
Serpentine Belt system with polished pulleys and alternator



Braided Stainless steel power steering hoses with black anodized clamps



Remote oil filter connector with Black Dash fittings and Braided Stainless hoses



Remote Oil Filter for easy access



- Hydraulic Clutch hose connections and bleeder
- Clutch can be bled without getting under the car

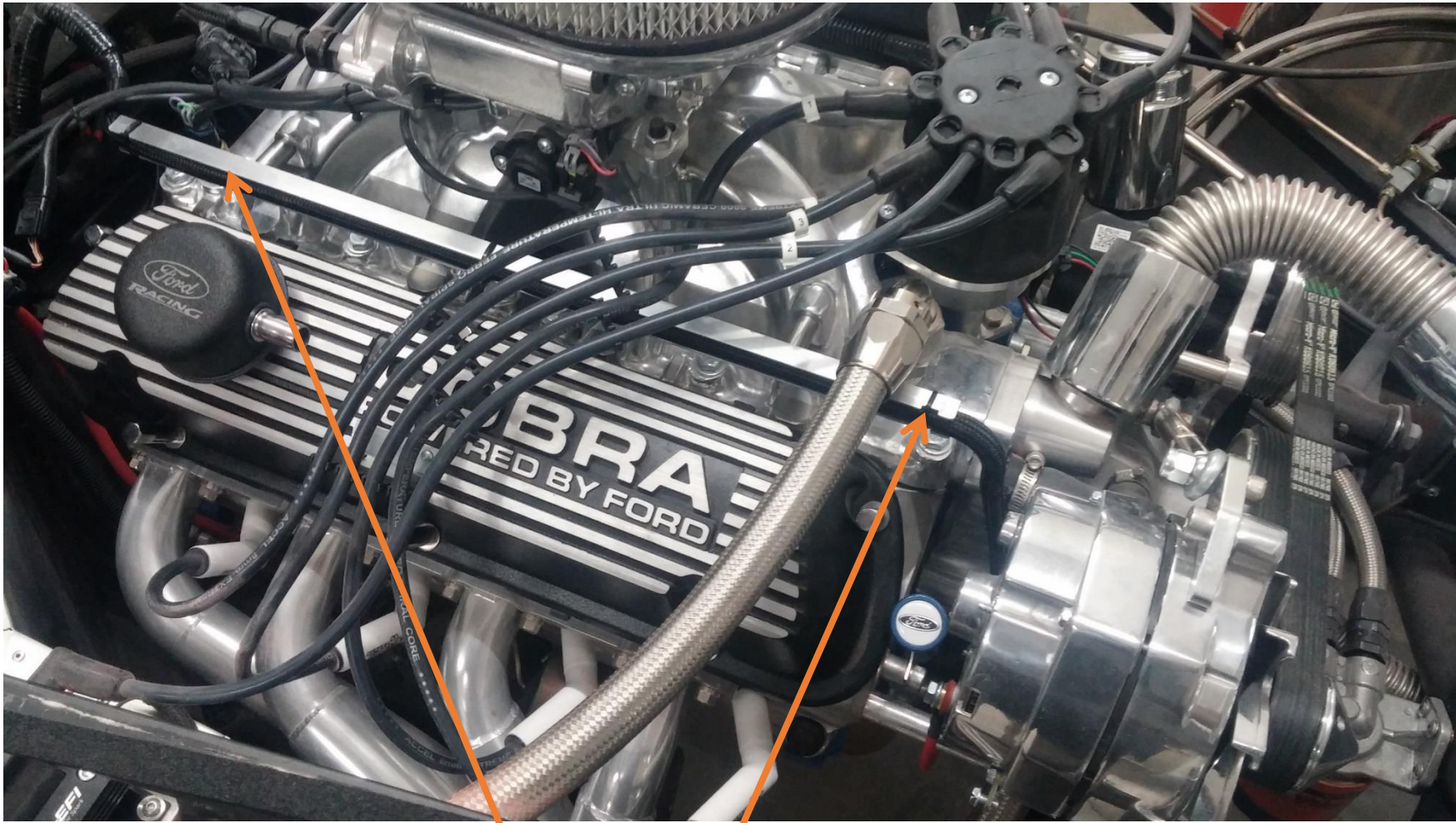
- Firewall mounted fuel pressure regulator with gauge
- Braided high pressure hoses with Black Dash fittings



- Braided Stainless heater hoses with Stainless Dash fittings



Engine with 90% of electrical and plumbing dressed out



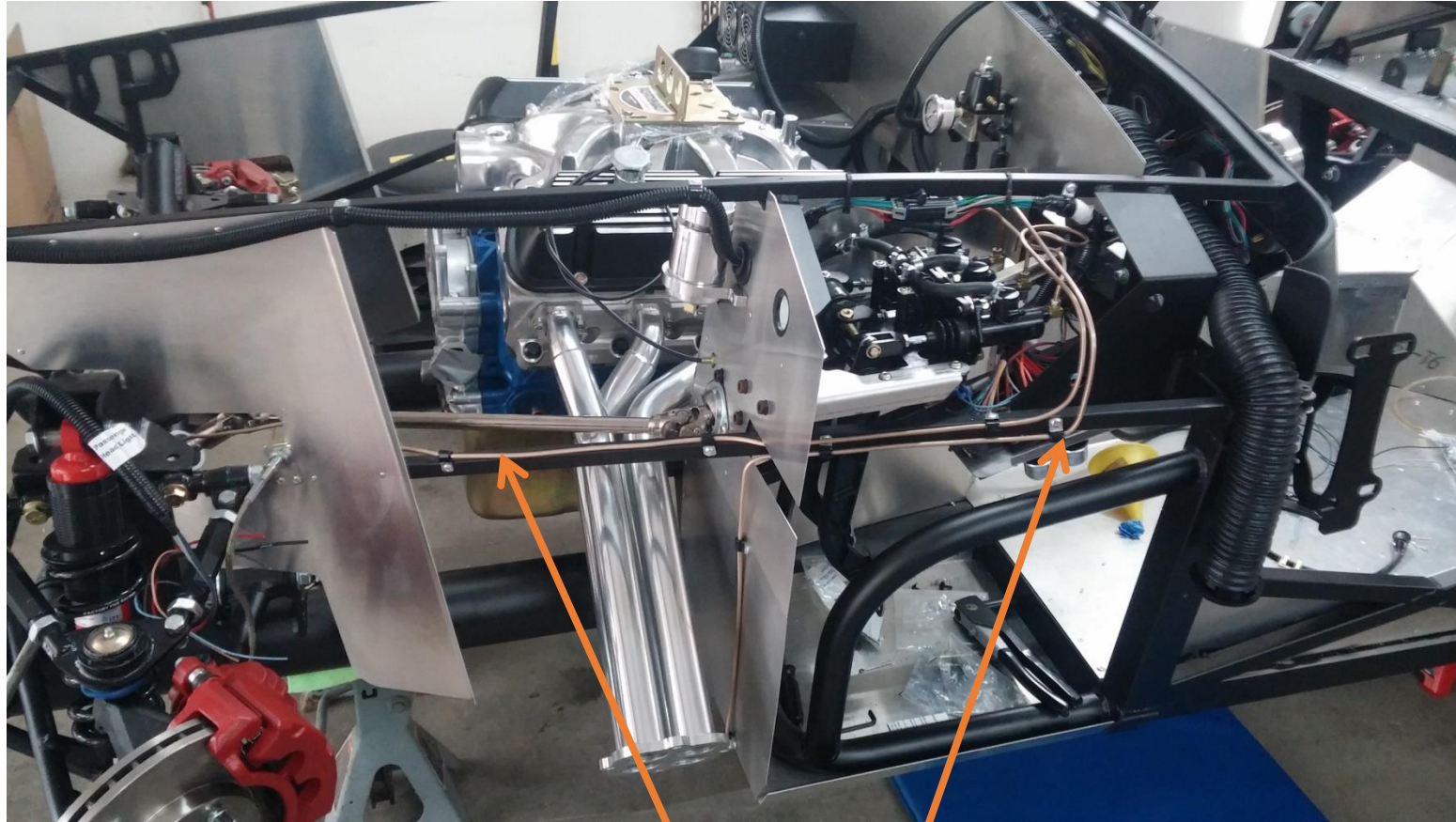
Wire management rails added to keep wires up off of cylinder heads



Foot-box / Header
heat shields

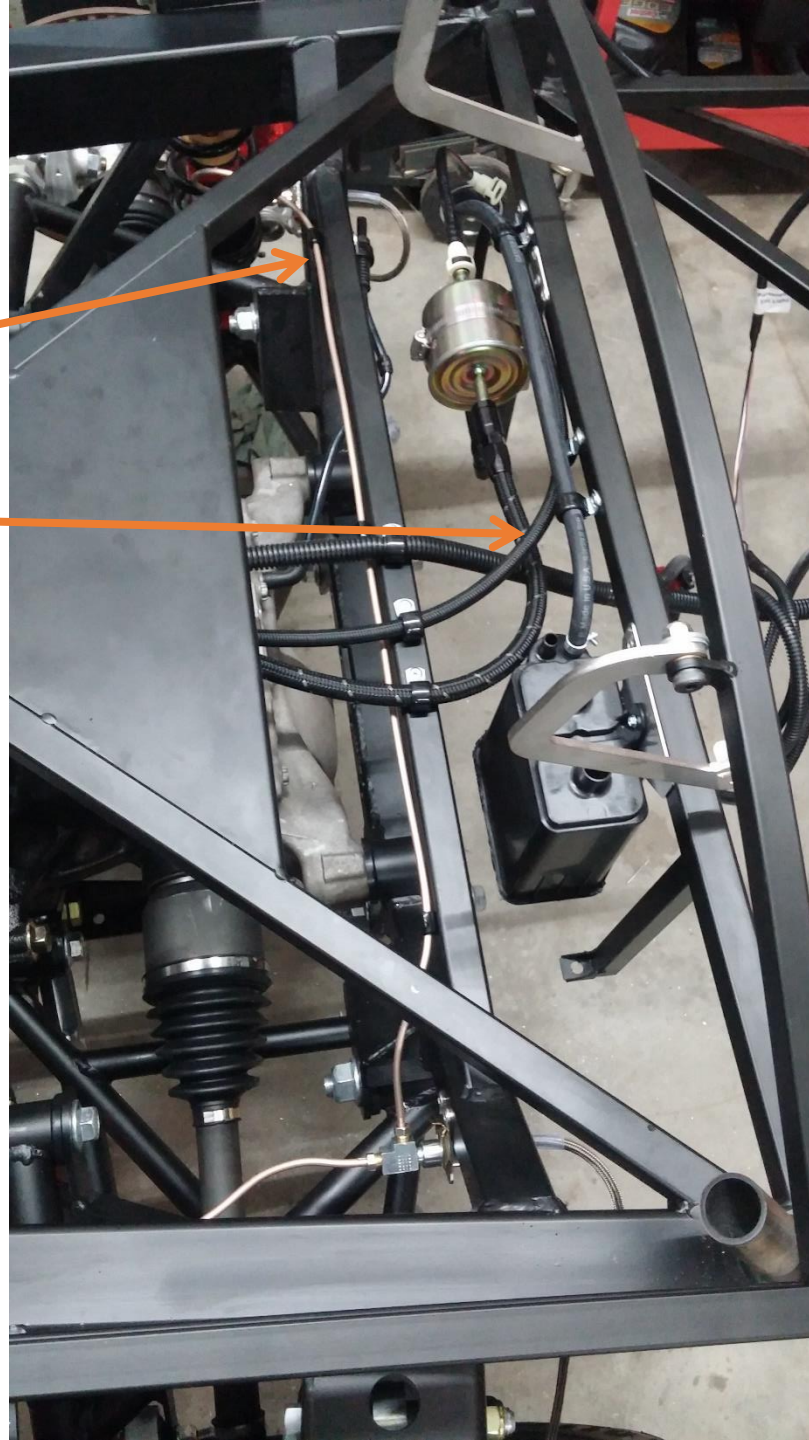


Brake line details

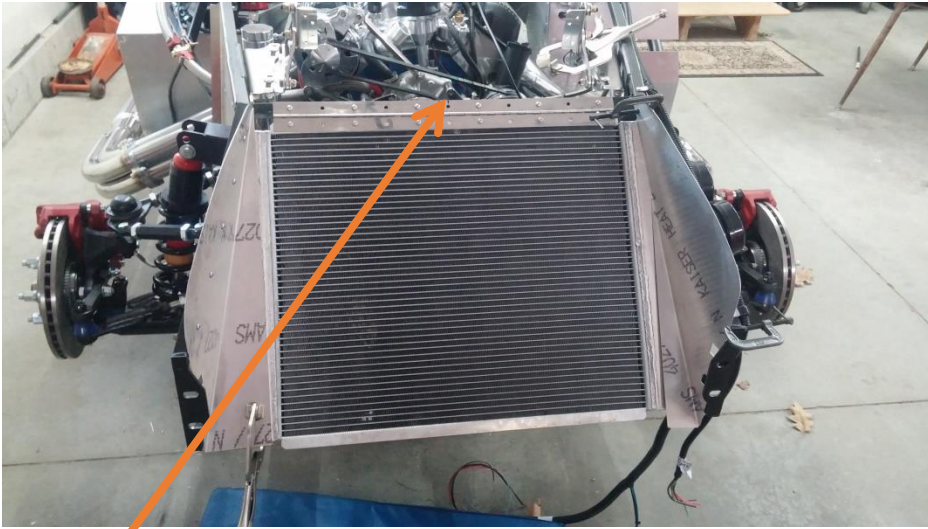


Custom made copper/nickel one piece brake lines for front and rear disc brakes

- Rear brake cross over tubing
- Braided fuel lines ready for connecting to the fuel tank



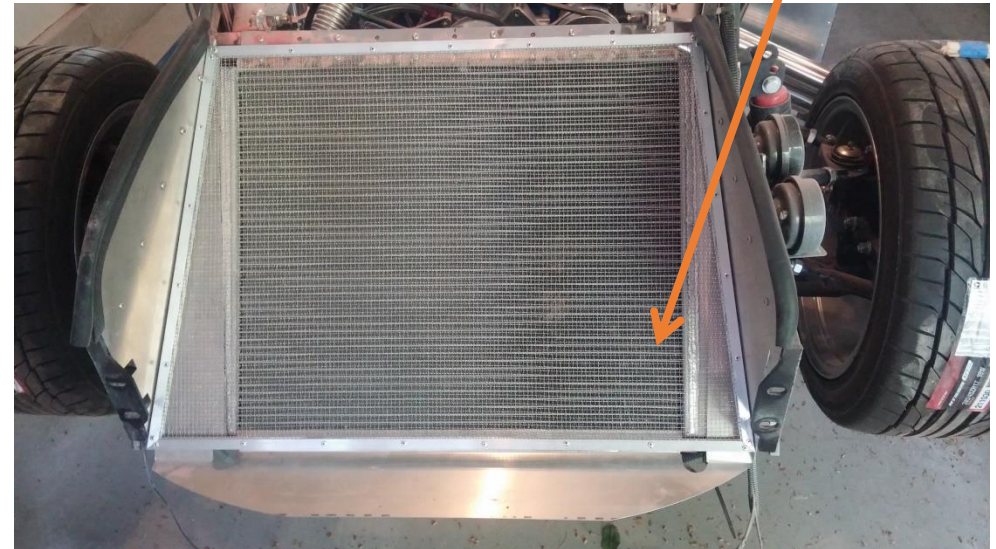
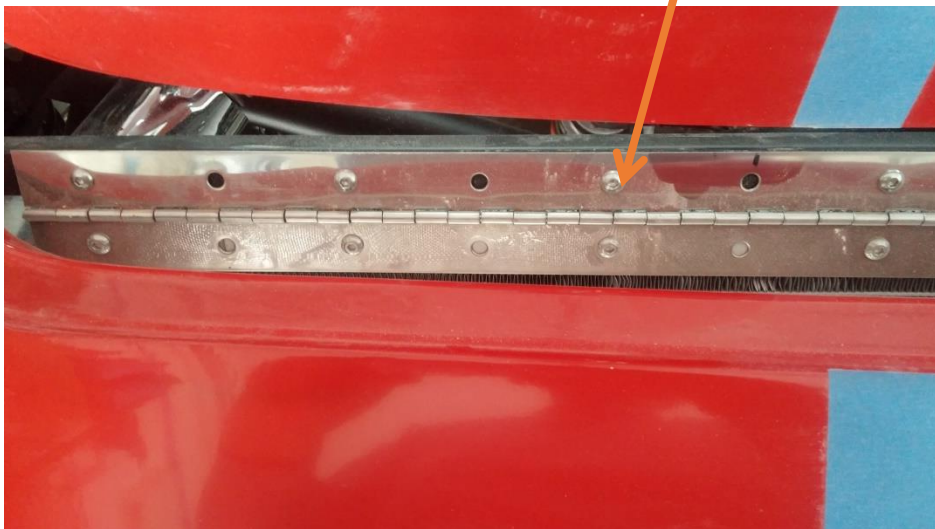
Radiator Details



- Continuous stainless hinge support for top of radiator
- Stainless cap screws fasteners



- Radiator side sections held in place with stainless cap screws and nut-serts instead of pop rivets
- Stainless steel radiator stone guard



Electrical details



Headlight plug integrated into the headlight bucket for LED installation. This feature allows the plug to be removed from the headlight bucket with cutting the wires making future service work easier.

LED Lamps and custom projector



Waterproof electrical pin connectors





- Upgraded battery holder and optima battery.
- Replaces top bracket and thread rods supplied with the kit

Cockpit details

Dash dimmer switch

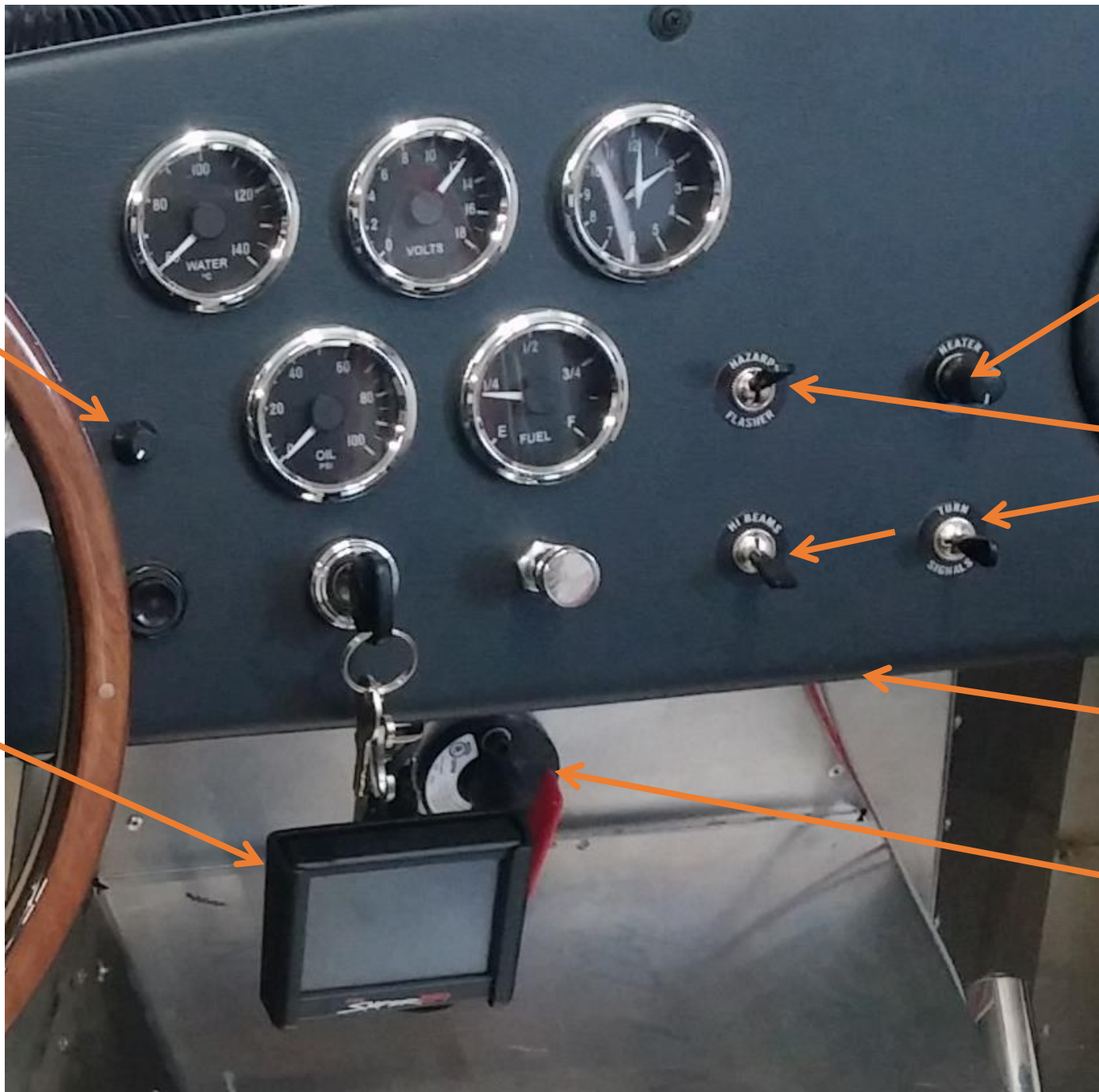
Heater fan control

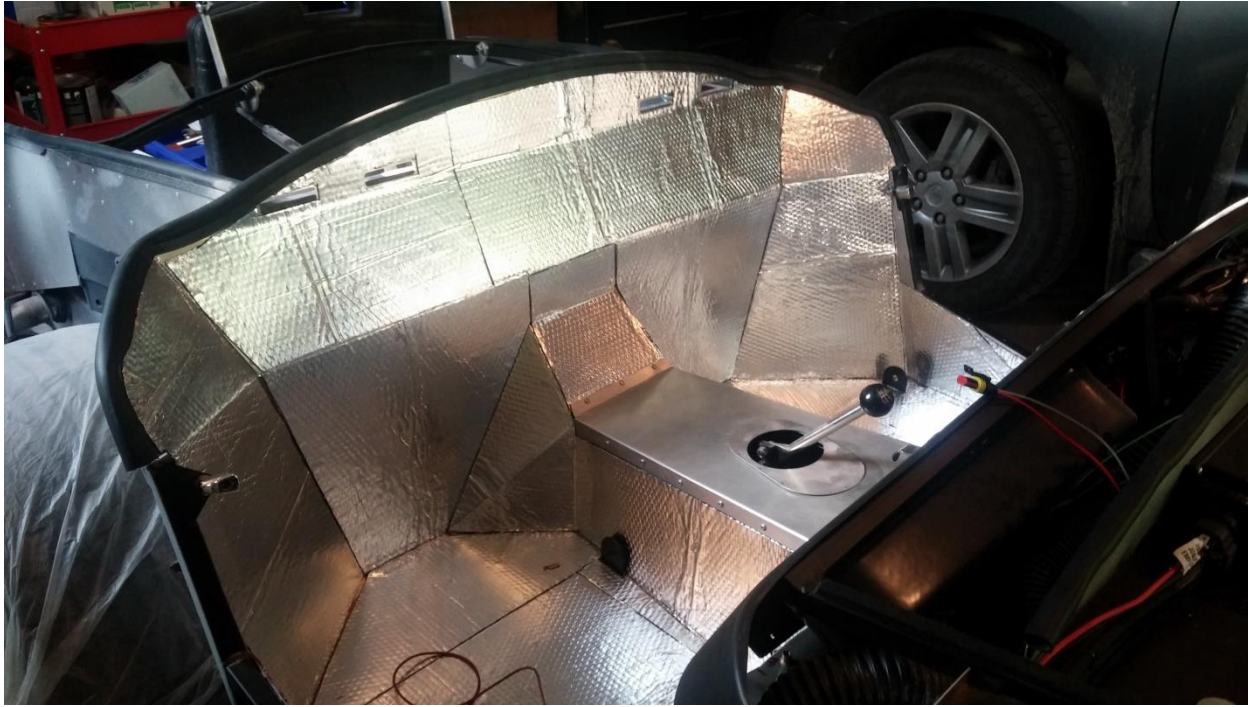
Flip down LED control screen for Sniper EFI Systems

Laser etched switch label bezels

USB charging ports (under dash)

Master power disconnect switch





Sound deadening and heat shielding



Fastener details

More than 150 pop rivets are replaced with nut inserts and stainless steel socketed cap screws. This is done to improve access and serviceability

Removable Transmission tunnel cover
(normally pop riveted into place)

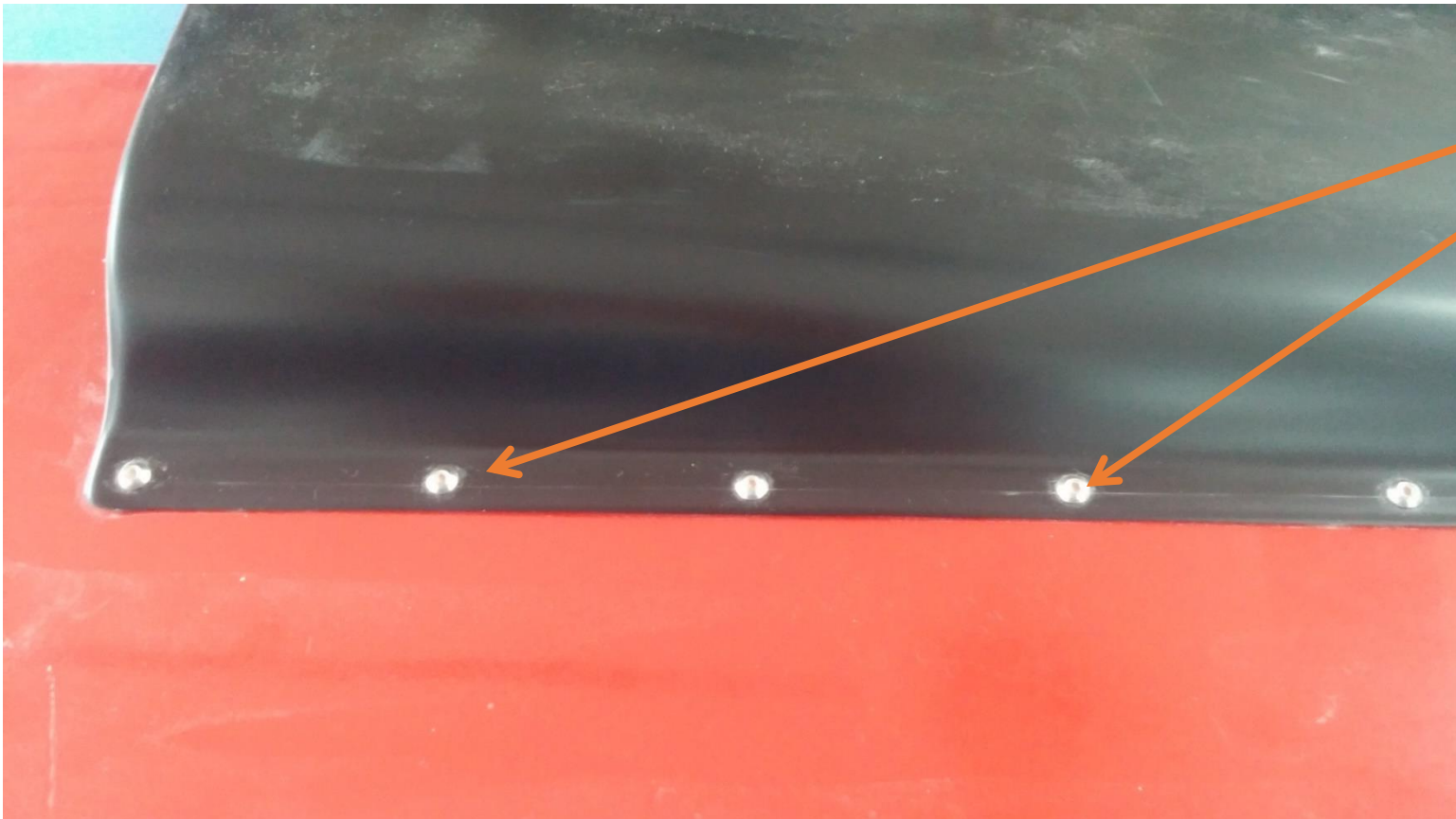




Stainless Socket head cap screws in place of pop rivets

Stainless flush mount fasteners on the underside so no threads show





Stainless Socket head cap screws in place of pop rivets (close up)



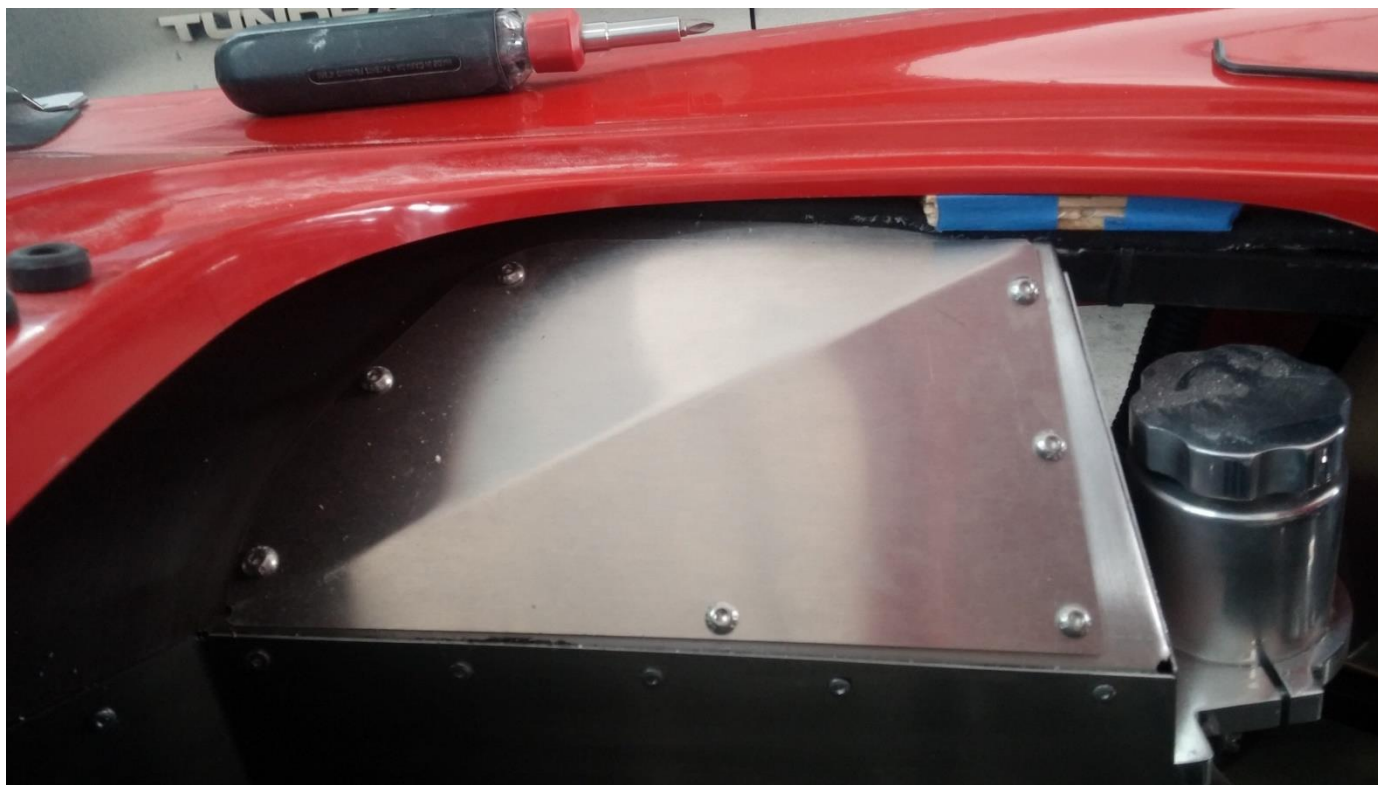
Stainless flush mount fasteners on the underside so no threads show (close up)





Hood Hinges and support bracket are normally pop riveted to the hood



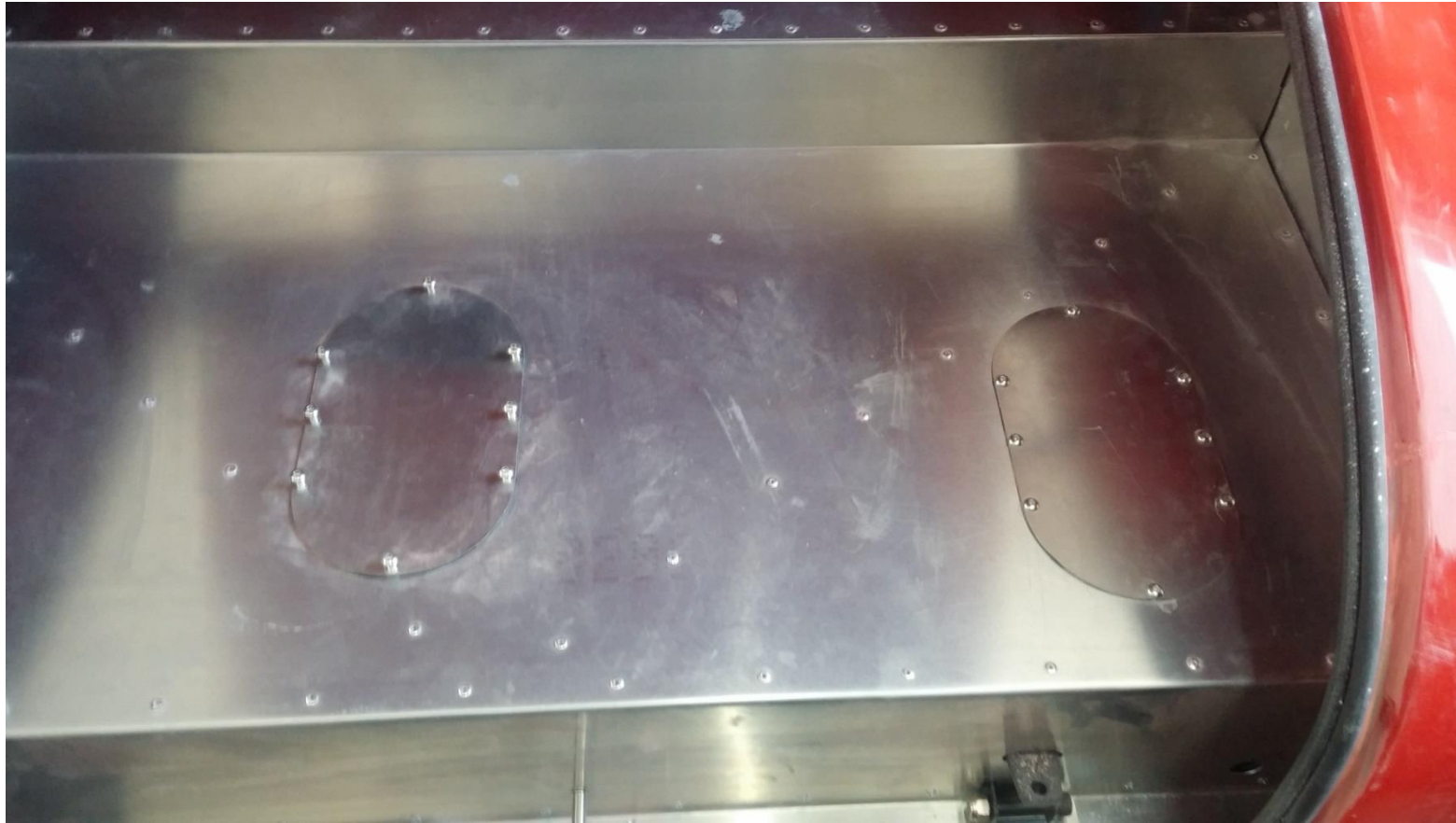


Access panel for master cylinders and top of drivers foot box



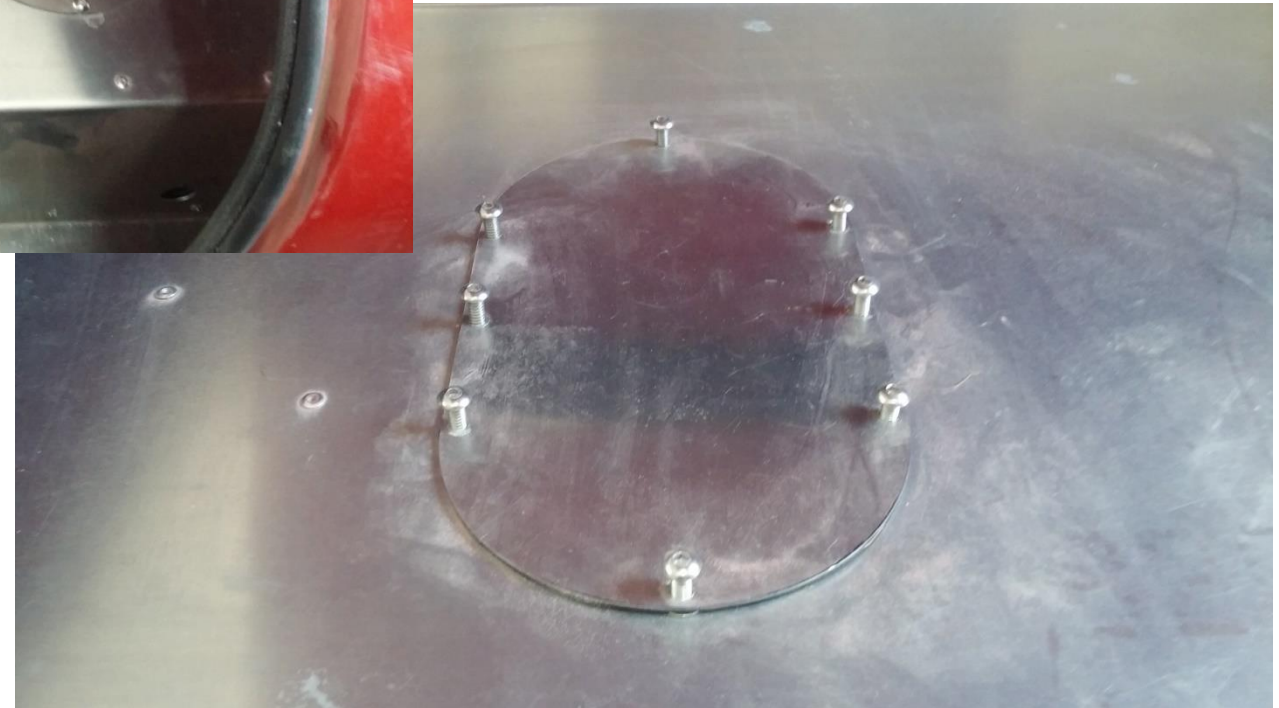
- Front wheel well liner per FFR instruction would be permanently pop riveted to the inner liner and to the body next to the exhaust exit
- The stainless cap screws and nut inserts improve ease of removal and service access





Fuel tank access panels
(normally pop riveted)

Stainless cap screws improve ease of
access and servicability





- Support leg for the roll bars are intended to be thru bolted, with the nut and bolt showing
- This assembly has been drilled and threaded so that a nut is not needed and a stainless button head cap screw is installed from the underside making it less visible





Completed chassis outside for engine break in, leak inspe



All components are fitted to the car prior to body work to insure fit and to minimize the need to drill holes once freshly painted